

TRAINING BULLETIN

#TB10005

TOPIC

FLOW SWITCH ADJUSTMENT

MODEL REFERENCE

B152EPGHT
PE-1520EP1COMH
X-1520FW1ARH
X-1520FW1GENH
X-2050FW1A
X-2050FW1GENHT
X-2775FW1A
X-2775FW1GENHT
X-2050FW3GENHT2
X-2050FW2GENHT4
X-2775FW3GENHT2
X-2775FW3GENHT4
X-3010FW3GENHT

B205EA
B205E34A
B2775EA
B2775E3AHE
B2775E34AHE
B3010E3AHE
B3010E34AHE



ISSUE:

MOTOR TO PRESSURE WASHER DOES NOT AUTOMATICALLY START WITH SPRAY TRIGGER ENGAGED. PLEASE ENSURE ALL OTHER START-UP PROCEDURES HAVE BEEN FOLLOWED PRIOR TO FOLLOWING THE STEPS OUTLINED IN THIS TRAINING BULLETIN. THIS INFORMATION TYPICALLY APPLIES TO NEW INSTALLATION TROUBLESHOOTING.

**MODELS RELATED AS
STANDARD EQUIPMENT:**

B152EPGHT
PE-1520EP1COMH
X-1520FW1ARH
X-1520FW1GENH
X-2050FW1A
X-2050FW1GENHT
X-2775FW1A
X-2775FW1GENHT
X-2050FW3GENHT2
X-2050FW2GENHT4
X-2775FW3GENHT2
X-2775FW3GENHT4

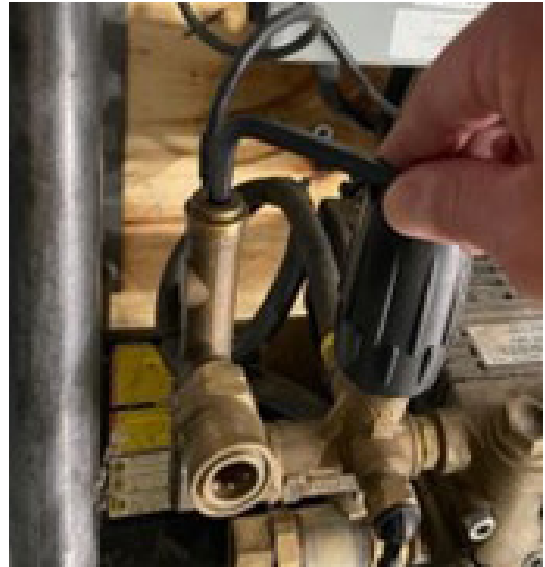
**MODELS RELATED AS
OPERTAIONAL EQUIPMENT:**

B205EA
B205E34A
B2775EA
B2775E3AHE
B2775E34AHE
B3010E3AHE
B3010E34AHE

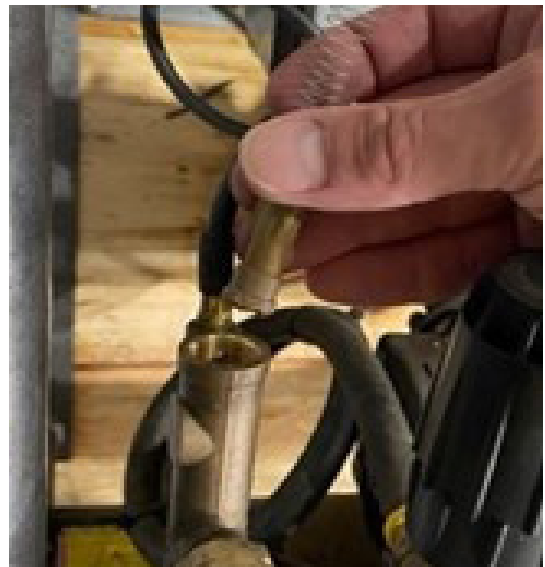
THE ABOVE MODELS OF PRESSURE WASHERS REQUIRE AN ADEQUATE AMOUNT OF SUPPLY WATER FLOW TO ACTIVATE THE POWER TO THE MOTOR AND ENGAGE THE PRESSURE WASHER. UNDER CERTAIN OPERATING CONDITIONS IT MAY BE NECESSARY TO ADJUST THE FLOW SWITCH TO ALLOW EASIER ACTIVATION OF POWER TO THE UNIT. SEE THE FOLLOWING STEPS TO REDUCE THE AMOUNT OF NEEDED SUPPLY WATER FLOW TO ACTIVATE THE FLOW SWITCH.

STEP 1

- Ensure electrical power and water supply are turned off.
- Locate the flow switch beside the black knob of the unloader valve on the pump. There is typically a black wire with a 7mm hex key sealing plug beside it.
- Remove the sealing plug.

**STEP 2**

Remove the spring and float (which contains a magnet) from the body of the flow switch

**STEP 3**

With a wire cutter, remove approximately 4 - 5 rings of the spring. This will allow the float with magnet to move with less effort and engage the electrical system.



STEP 4

- Re-install into the body of the flow switch the float with magnet, spring, and sealing plug.
- Tighten the sealing plug, and turn water supply and electrical supply on.
- Follow any other proper start up instructions for use.

